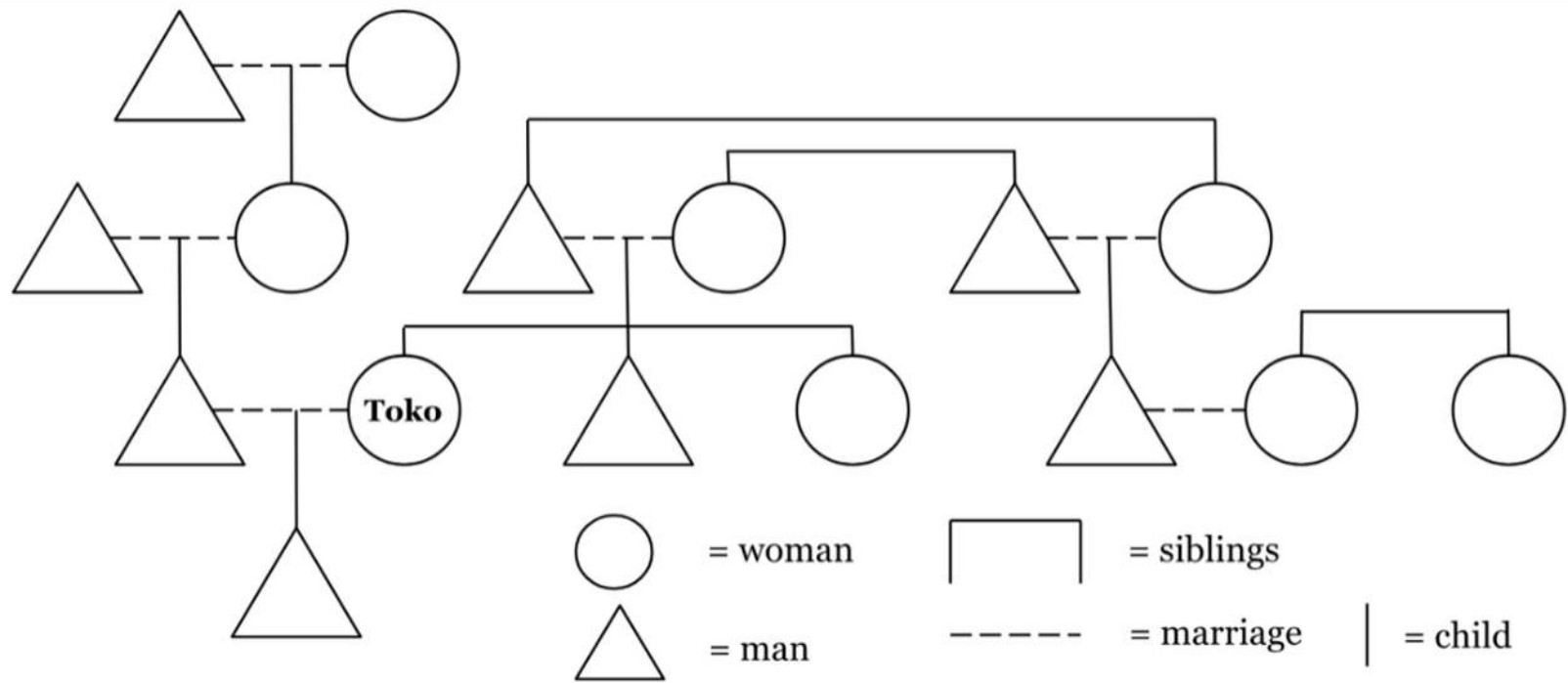


# Problem 3

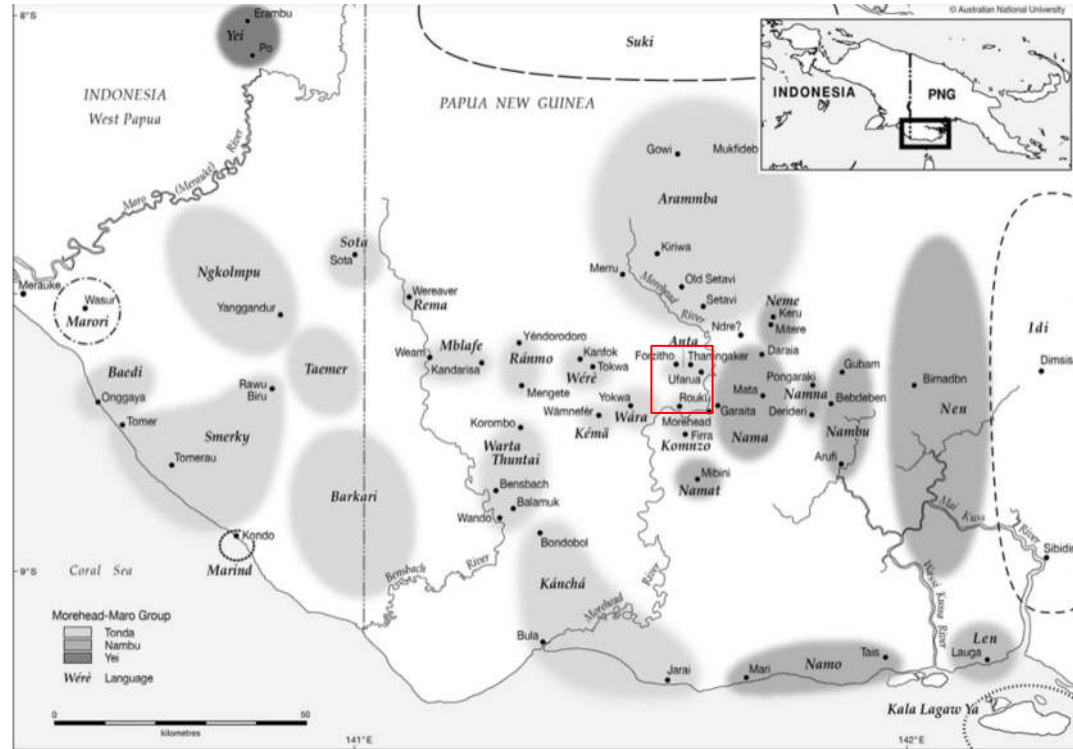
# Komnzo

By Aida Davletova



# Komnzo Language

- a. k. a. *Kómnzō*, *Kómnpjō*, or *Kamundjō* – a Yam language spoken by Farem people of PNG
- ~200 speakers
- A grammar of Komnzo (2018) by Christian Döhler



# Grading Team

Stanislav Gurevich

Yuyang Liu

Przemysław Podleśny

Maria Rubinstein



# Connection to IOL 2024

→ Also a family connected  
by a tree this year!



# Approaching the problem

# Possible Entry Points

• **A + B-ane K rä/yé.**

A – who?

B – who's?

K – what relative?

# Possible Entry Points

12. Abia Gwamane yamit yé.
19. Wims Gwamane yamit rä.
26. Toko Gwamane yamit rä.



# Possible Entry Points

Gwam? Mabata?

| rä     | yé     |
|--------|--------|
| Wafine | Mea    |
| Naimr  | Marua  |
| Trafe  | Abia   |
| Nfiyam | Tawth  |
| Wims   | Kurai  |
| Toko   | Skri   |
| Nakre  | Maraga |
|        |        |



| rä          | yé     |
|-------------|--------|
| Wafine      | Mea    |
| Naimr       | Marua  |
| Trafe       | Abia   |
| Nfiyam      | Tawth  |
| Wims        | Kurai  |
| <b>Toko</b> | Skri   |
| Nakre       | Maraga |
|             |        |

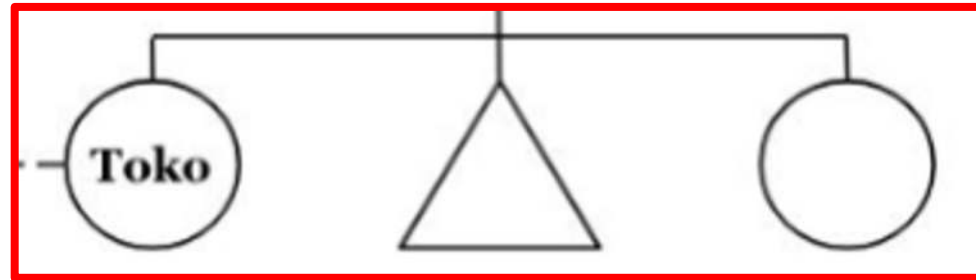


| rä ♀        | yé ♂   |
|-------------|--------|
| Wafine      | Mea    |
| Naimr       | Marua  |
| Trafe       | Abia   |
| Nfiyam      | Tawth  |
| Wims        | Kurai  |
| <b>Toko</b> | Skri   |
| Nakre       | Maraga |
|             |        |

# Possible Entry Points

- 12. Abia Gwamane yamit yé.
- 19. Wims Gwamane yamit rä.
- 26. Toko Gwamane yamit rä.

- 
- 24. Abia Tokoane ngth yé.
  - 25. Toko Wimsane nane rä.
  - 29. Abia Wimsane nane yé.



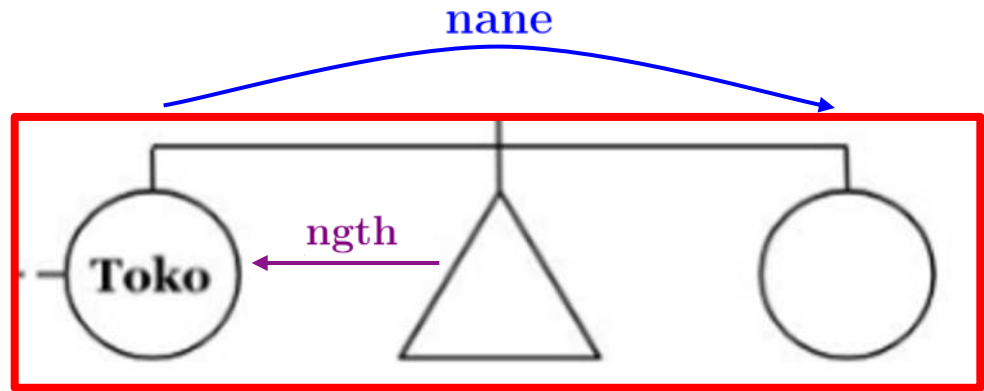
**Abia**

**Wims**

# Possible Entry Points

- 12. Abia Gwamane yamit yé.
- 19. Wims Gwamane yamit rä.
- 26. Toko Gwamane yamit rä.

- 24. Abia Tokoane ngth yé.
- 25. Toko Wimsane nane rä.
- 29. Abia Wimsane nane yé.

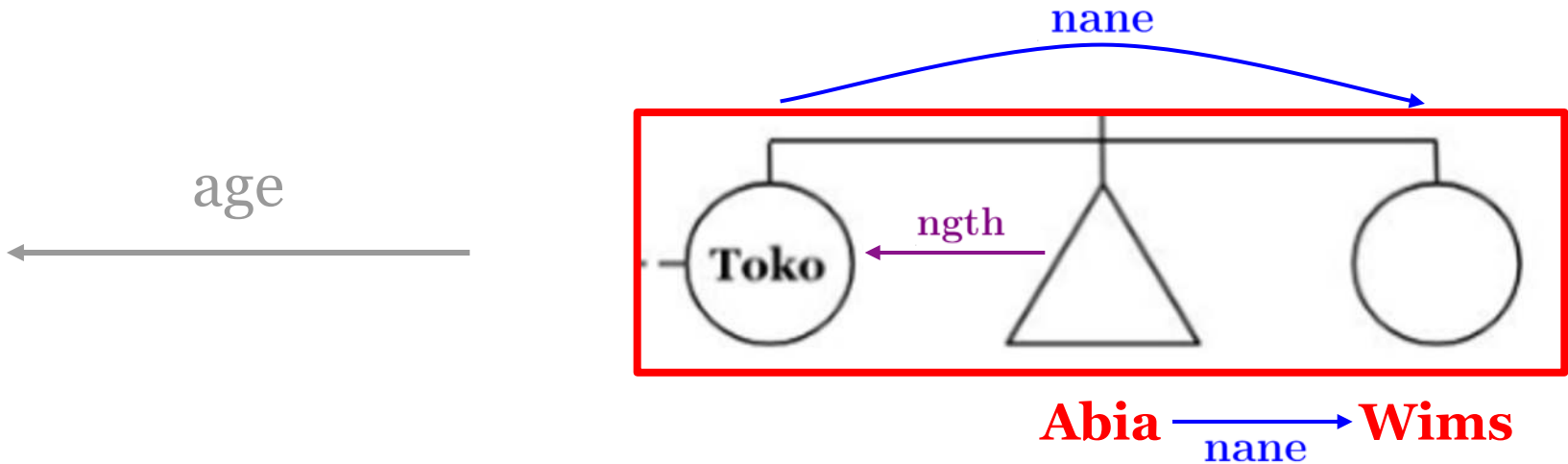


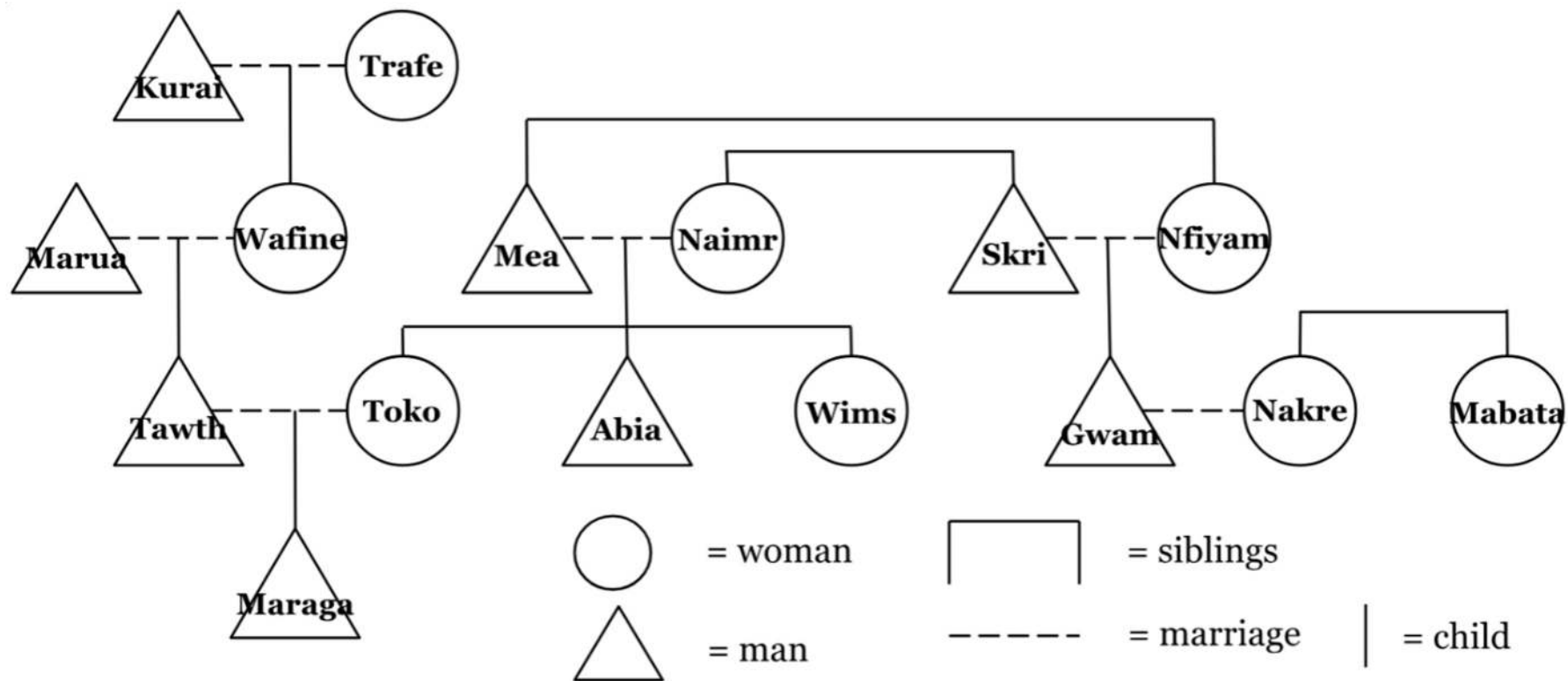
**Abia**  $\xrightarrow{\text{nane}}$  **Wims**

# Possible Entry Points

- 12. Abia Gwamane yamit yé.
- 19. Wims Gwamane yamit rä.
- 26. Toko Gwamane yamit rä.

- 24. Abia Tokoane ngth yé.
- 25. Toko Wimsane nane rä.
- 29. Abia Wimsane nane yé.





# Kinship System

## Features:

- Reciprocal terms
  - Some with specification for gender
- Terms reserved for sister-exchange
- Genderless siblings

# Kinship Terms

A + B-ane K rä/yé.

A – who?

B – who's?

K – what relative?

| rä        | yé     |
|-----------|--------|
| nge       |        |
| bäiŋam    | bäiŋaf |
| ŋafe      | ŋame   |
| zath ŋare | zath   |
| yamit     |        |
| nane      |        |
|           | enat   |
| yumad     |        |
|           | ŋäwi   |
|           | ngth   |

# Kinship Terms

- **nge** – child
- **ŋame** – mother
- **ŋafe** – father
- **nane** – older sibling
- **ngth** – younger sibling
- **ŋäwi** – uncle (mom's brother, non-SE)
- **zath** – grandfather/grandson
- **zath ŋare** – grandmother/granddaughter
- enat** – father-in-law/son-in-law

## *Sister-exchange terms:*

- **bäiŋam** – SE aunt/niece (dad's sister; mom's brother's wife & daughter of one's exchange fellows)
- **bäiŋaf** – SE uncle/nephew
- **yamit** – exchange-cousin (child of *bäiŋam* & *bäiŋaf*)
- **yumad** – wife of *yamit*

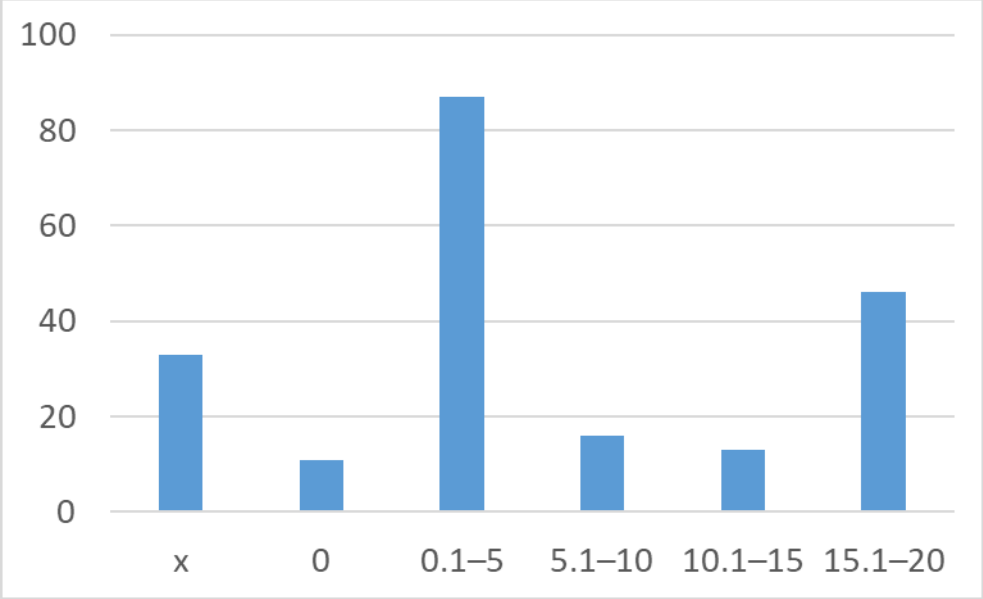
## Assignment (b)

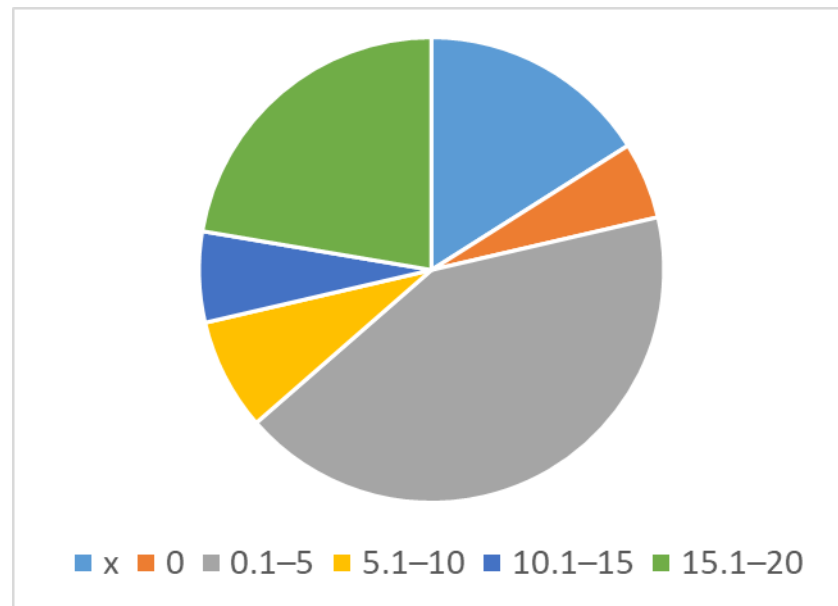
6. Naimr Gwamane **bäiṅam rä.**
11. Tawth Meaane **enat yé.**
16. Trafe Tawthane **zath ṅare rä.**
20. Maraga Tawthane **nge yé.**
30. Mabata **Nakreane** ngth rä.

## Assignment (c)

Skrii Abianane **bäiŋaf** yé.

Skri, though happens to be Abia's uncle, has passed through sister exchange with Abia's father, therefore he's **bäiŋaf**, not **ŋäwi**.





And the BEST SOLUTION

goes to...



# Narongrith Artnarongrith



# Tyson Lieu



# Sofia Soto



Obrigado!